



Glosten

# GUEMES ISLAND FERRY TERMINAL MODIFICATIONS

NEIGHBORHOOD MEETING  
JANUARY 6, 2021



Glosten

# PRESENTATION TOPICS

1. Compliance and Permits
2. Project Overview
3. Habitat Survey Results
4. Potential Mitigation
5. Questions

# COMPLIANCE AND PERMITS

- Local
  - Shoreline Substantial Development Permit (Skagit County, City of Anacortes)
  - Building Permit (City of Anacortes)
- State
  - State Environmental Policy Act (Ecology, Skagit County, City of Anacortes)
  - Aquatic Lease (DNR – existing)
  - Hydraulic Project Approval (WDFW)
  - 401 Water Quality Certification (Ecology)
  - Coastal Zone Management Act Certification (US Army Corps of Engineers, Ecology)
- Federal
  - Rivers and Harbors Act Section 10 (US Army Corps of Engineers)
  - National Historic Preservation Act Section 106 (US Army Corps of Engineers)
  - Endangered Species Act Section 7 Consultation (USFWS and NMFS)
  - Improvements on Navigation Lighting (US Coast Guard)

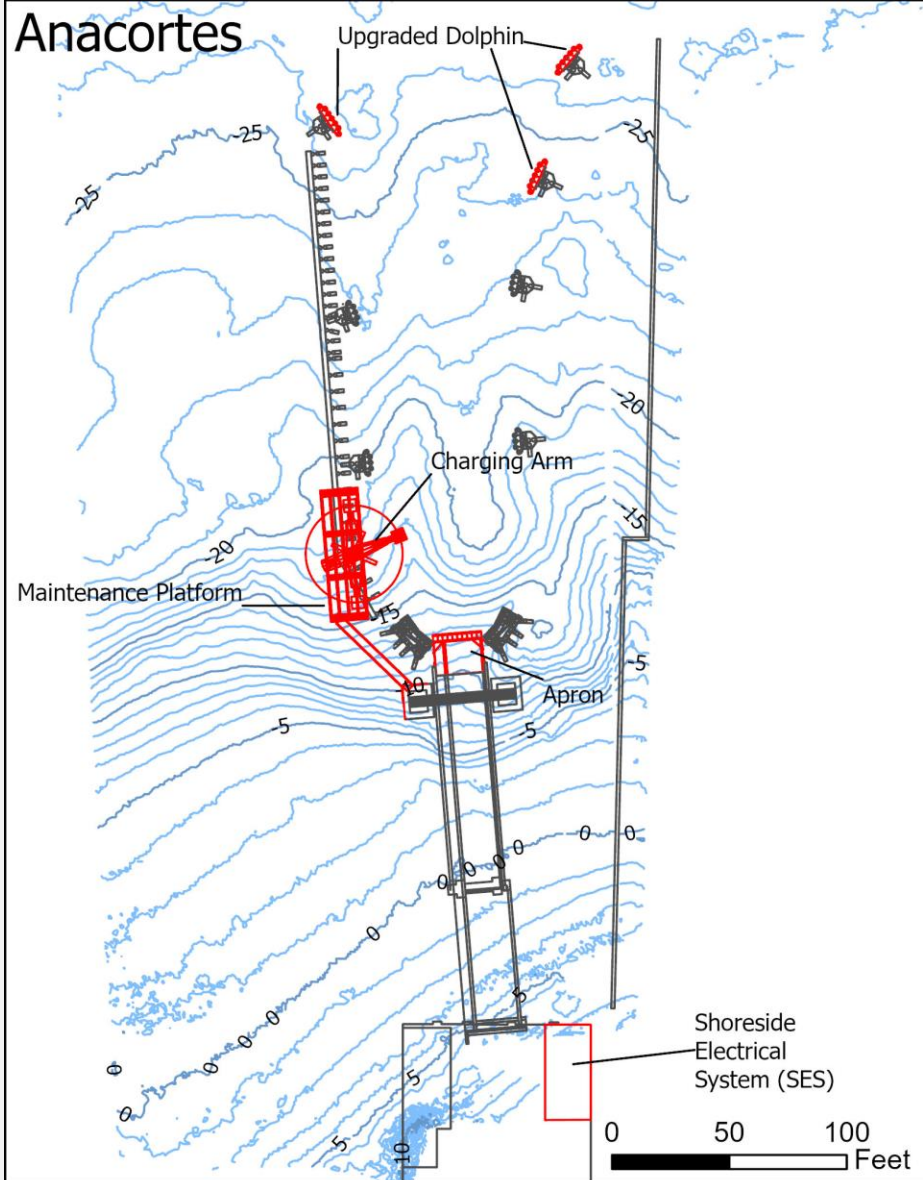
## PROJECT OVERVIEW: PROJECT GOAL

To support anticipated ridership through 2060 and to limit environmental impacts of the ferry service, Skagit County is replacing the current vessel with a battery-electric vessel. Terminal modifications are necessary to support the larger and heavier vessel.

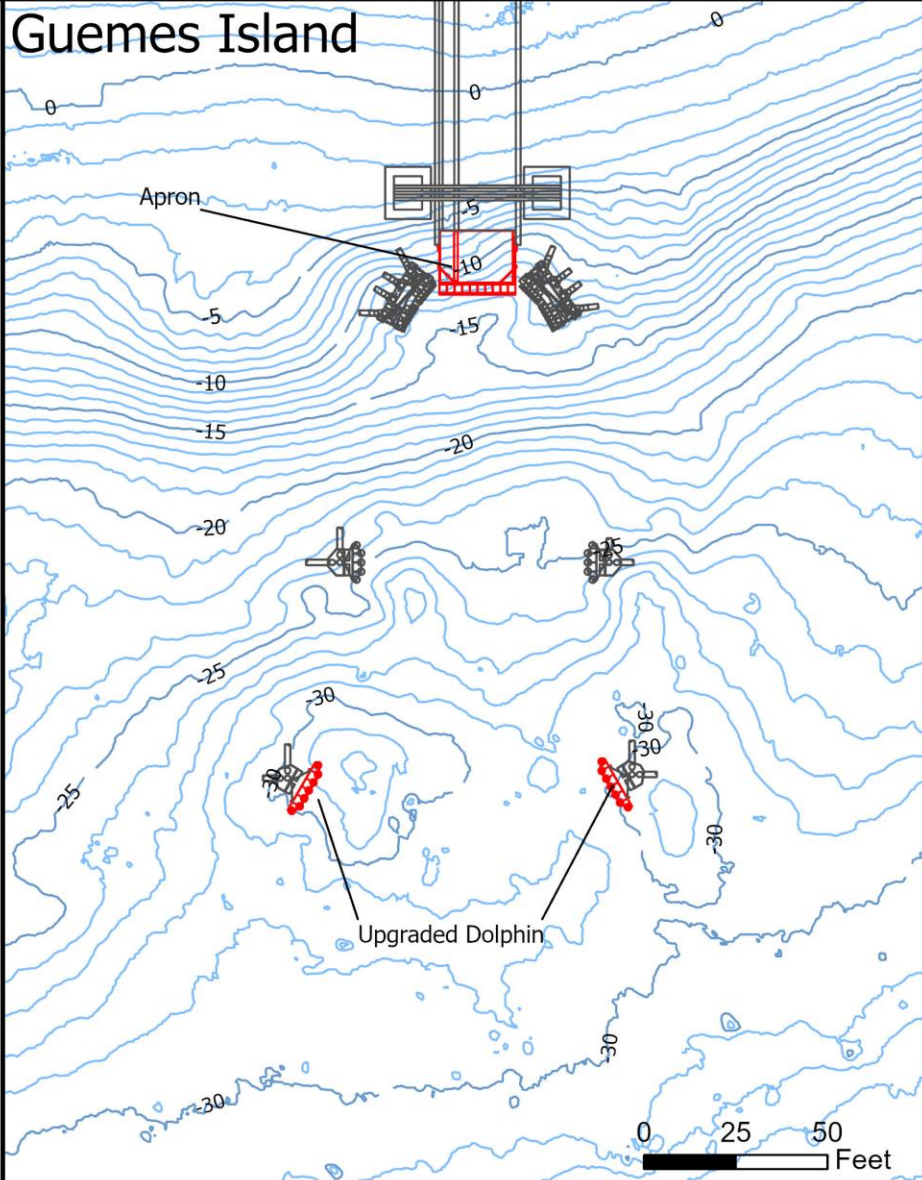
# PROJECT OVERVIEW: TERMINAL MODIFICATIONS

Anacortes	Guemes Island
<ul style="list-style-type: none"><li>• Charging arm and maintenance platform installation</li></ul>	<ul style="list-style-type: none"><li>• Upgrade 2 dolphins</li></ul>
<ul style="list-style-type: none"><li>• Upgrade 3 dolphins</li></ul>	<ul style="list-style-type: none"><li>• Replace loading apron</li></ul>
<ul style="list-style-type: none"><li>• Replace loading apron</li></ul>	<ul style="list-style-type: none"><li>• Wingwall upgrade</li></ul>
<ul style="list-style-type: none"><li>• Wingwall upgrade</li></ul>	
<ul style="list-style-type: none"><li>• Shoreside electrical system</li></ul>	

# Anacortes



# Guemes Island



- Existing Feature
- Proposed Feature
- Bathymetry 5'-Contour
- Bathymetry 1'-Contour



# PROJECT OVERVIEW: SUMMARY OF WORK

Feature	Support Structures	Anacortes		Guemes Island	
		SF	Piles	SF	Piles
<b>Charging Arm</b>	Platform Cap (solid)	36	4	--	--
<b>Maintenance Platform</b>	Grated Decking	896	8	--	--
<b>Catwalk</b>	Grated Decking	136	--	--	--
<b>Dolphins</b>	Relocated Fender Piles	--	6	--	4
	New 18-inch Steel Piles	--	6	--	4
<b>Wingwalls</b>	Face Timbers and Walers	--	--	--	--
<b>Loading Apron</b>	New Apron (solid)	22	--	22	--
<b>Total</b>		1,090	24	22	8



# HABITAT SURVEY RESULTS

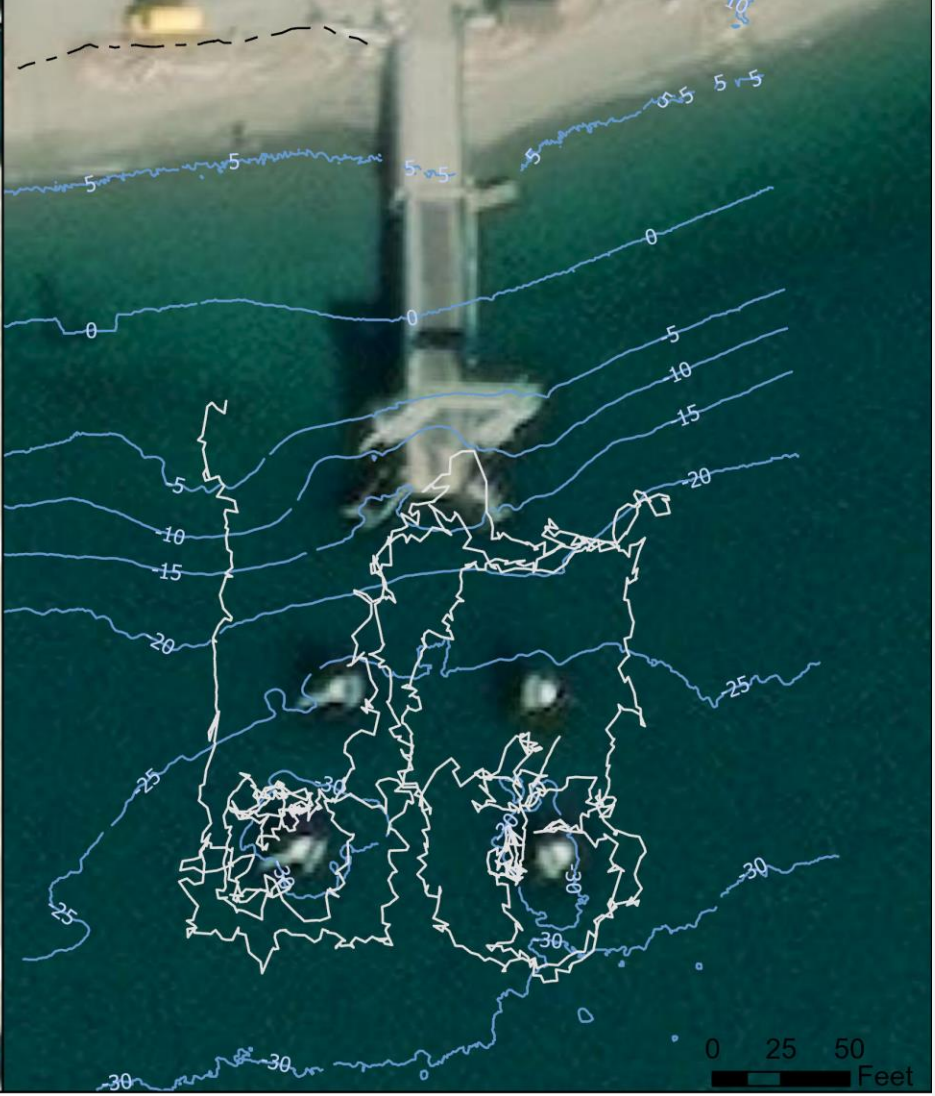
- Field survey conducted on July 16, 2021
- Collected approximately 1.5 hours of underwater video at the Anacortes and Guemes Island terminals
- Video analyzed for presence of eelgrass, attached macroalgae, and other macroalgae (i.e., drift)

Eelgrass	Attached Macroalgae Percent Cover	Other Macroalgae Percent Cover	Substrate
Present	None	≤10%	Cobble
Absent	1-25%	11-25%	Gravel/Sand
	26-69%	26-75%	Fines
	≥70%	≥75%	

# Anacortes



# Guemes Island



### Eelgrass Presence

- Present
- Eelgrass Bed

Generalized Seagrass Polygon (DNR)

— Video Track

- - - High Tide Line

— Bathymetry 5'-Contour





## POTENTIAL MITIGATION

- Removal of Sinclair Island Dock
  - ~100 piles (96 wood, 4 steel)
  - Overwater structure
  - Benefits include:
    - Provides habitat within the same basin as Guemes Channel
    - Resolves issue with failing structure
    - DNR is supportive of using the site for mitigation

# CONTACT INFORMATION AND ADDITIONAL RESOURCES

## **Captain Rachel Rowe**

Ferry Operations Division Manager

Skagit County Public Works

Direct Line: (360) 416-1466

[rrowe@co.skagit.wa.us](mailto:rrowe@co.skagit.wa.us)

## **Marlene Meaders**

Environmental Permitting Lead

Confluence Environmental Company

Direct Line: (206) 724-5781

[marlene.meaders@confenv.com](mailto:marlene.meaders@confenv.com)

Project Website: <https://www.skagitcounty.net/Departments/PublicWorksFerryReplacement>